



Score Report

CAMPUS / DISTRICT GREEN CERTIFICATION

INSIDE THIS ISSUE:

What is H1N1	1
Emergency Signs	1-2
Vaccine	2
Recommended School Response	3
Cleaning for Human Health	4



What is H1N1 (Swine) flu?

H1N1 (referred to as “swine flu” early on) is a new influenza virus causing illness in people. This new virus was first detected in people in the United States in April 2009. Other countries, including Mexico and Canada, have reported people sick with this new virus.

The Department of Health and Human Services has declared a health emergency in the United States in response to the rise in the number of confirmed cases reported of H1N1 Influenza A.

This virus is spreading from person-to-person, probably in much the same way that regular seasonal influenza viruses spread. Flu viruses are spread mainly from person to person



through coughing or sneezing by people with influenza. People may become infected by touching something with the flu viruses on it and then touching their mouths or noses. Guidance published by the CDC for infection control advises that “disinfection strategies used during influenza seasons can be applied

to the environmental management of swine influenza.” Additional guidance published for infection control recommends keeping “surfaces (especially tables, surfaces in the bathroom, and toys for children) clean by wiping them down with a disinfectant according to directions on the product label.”

Emergency Warning Signs In Children:

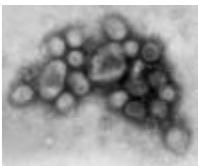
- **Fast breathing or trouble breathing**
- **Bluish or gray skin color**
- **Not drinking enough fluids**
- **Severe or persistent vomiting**
- **Not waking up or not interacting**
- **Irritable, the child does not want to be held**
- **Flu-like symptoms improve but then return with fever and worse cough**



Emergency Warning Signs In Adults:

- Difficulty breathing or shortness of breath
- Pain or pressure in the chest or abdomen
- Sudden dizziness
- Confusion
- Severe or persistent vomiting
- Flu-like symptoms improve but then return with fever and worse cough

2009 H1N1 Influenza A Vaccine



The 2009 H1N1 vaccine is expected to be available in the fall. More specific dates cannot be provided at this time as vaccine availability depends on several factors including manufacturing time and time needed to conduct clinical trials.

CDC's Advisory Committee on Immunization Practices (ACIP) has recommended that certain groups of the population receive the 2009 H1N1 vaccine when it first becomes available. These target groups include:

- **Pregnant women**
- **People who live with or care for children younger than 6 months of age**
- **Healthcare and emergency medical services personnel**
- **Persons between the ages of 6 months and 24 years old**
- **People ages of 25 through 64 years of age who are at higher risk of 2009 H1N1 because of chronic health disorders or compromised immune systems.**

Recommended School Responses for 2009-2010

Stay home when sick:

Those with flu-like illness should stay home for at least 24 hours after they no longer have a fever or signs of a fever, without the use of fever-reducing medicines. They should stay at home even if they are using antiviral drugs.

Separate ill students and staff:

Students and staff who appear to have flu-like illness should be sent to a room separate from others until they can be sent home. CDC recommends that they wear a surgical mask, if possible, and that those who care for ill students and staff wear protective gear such as a mask.

Hand hygiene and respiratory etiquette:

The new recommendations emphasize the importance of the basic foundations of influenza prevention: stay home when sick, wash hands frequently with soap and water when possible, and cover noses and mouths with a tissue when coughing or sneezing. Alcohol-based hand sanitizers and sanitizer gels are also effective when soap and water are not easily accessible.

Routine cleaning:

School staff should routinely clean areas that students and staff touch often with the cleaners they typically use. Areas targeted for disinfecting include touch points in washrooms, shower areas, workout equipment and wrestling mats.

Encourage medical evaluation:

Encourage medical evaluations for sick students and staff at higher risk of complications from flu. People at high risk of flu complications who get sick will benefit from early treatment with antiviral medicines.

Stay in regular communication with local public health officials



"...wash hands frequently with soap and water..."





SCORE Report
2401 West Herrin Ave.
Herrin, IL 62948

Contact: Jim Sheffer, Director
of Sustainable Building Care
Phone: 618.924.0272
E-mail: info@scorereport.org

SCORE REPORT: Green Cleaning & Cleaning for Human Health

Score Report is a school-based organization that offers districts and campuses an opportunity to achieve green cleaning certification by engaging in SCORE, a cost-managed curriculum designed to address the considerable challenges surrounding cleaning school buildings today. The program encompasses the use of eco-sensitive products and procedures along with a full and comprehensive training program that raises awareness and promotes health and safety of everyone involved.

Green Cleaning and Cleaning for Human Health go hand in hand. The prudent selection and application of disinfectants are a critical component to SCORE and all members receive comprehensive training on the Principles of Disinfection.

Members have a selection of products to help prevent the spread of the H1N1 Influenza:

Disinfectants – EPA compliant, neutral pH, no added perfume or artificial coloring

Hand Cleaners- Green Seal Certified

Facial Tissue –Green Seal Certified, Eco-Logo Certified, EPA Compliant

Touch-Free Towel & Tissue Systems – Green Seal Certified, Eco-Logo Certified

Touch-Free Hand Sanitizer & Soap Dispensing Systems

Gloves, Masks & Additional Personal Protection Equipment

Disinfecting Wipes – neutral pH, recyclable containers

